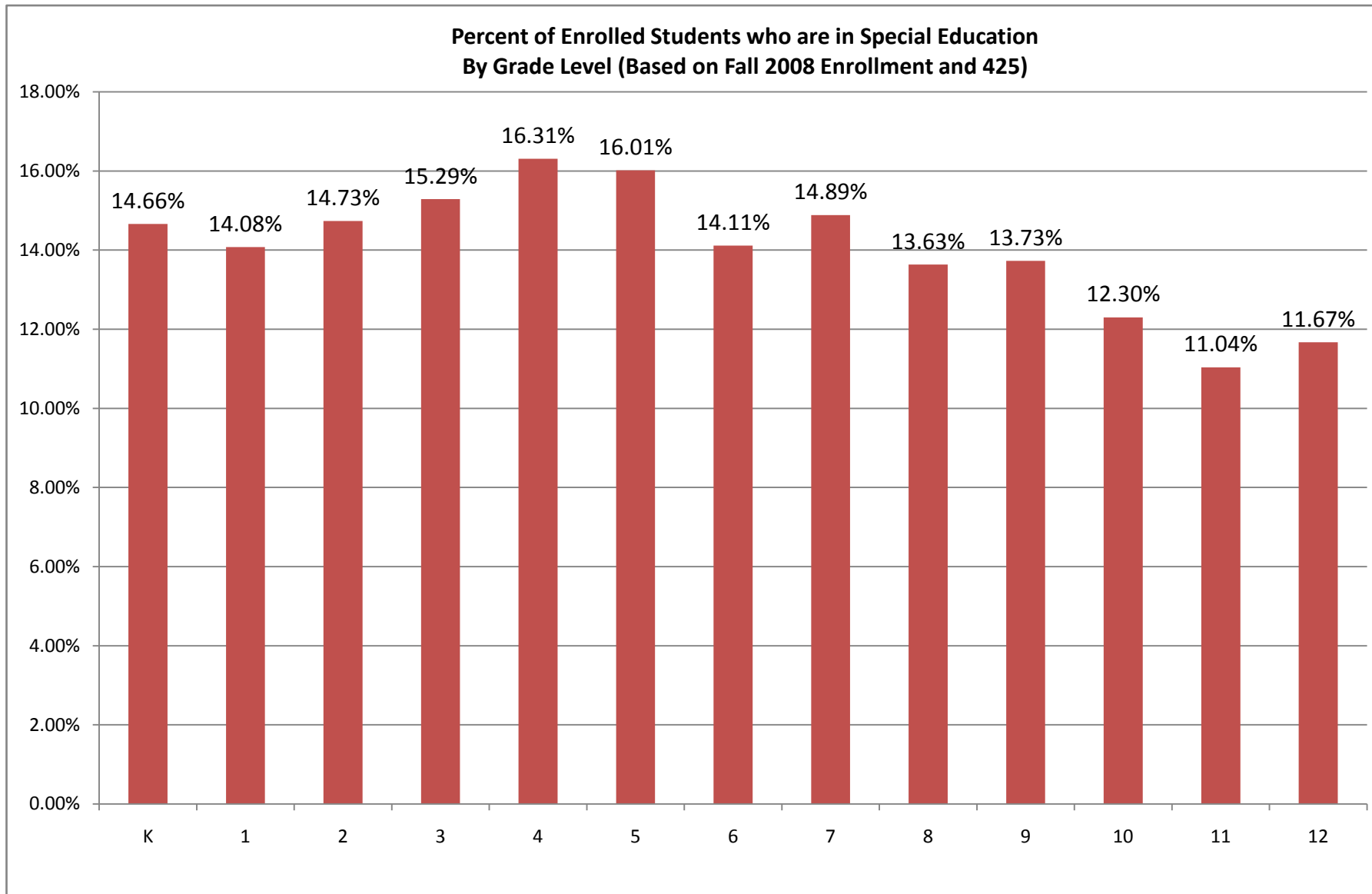
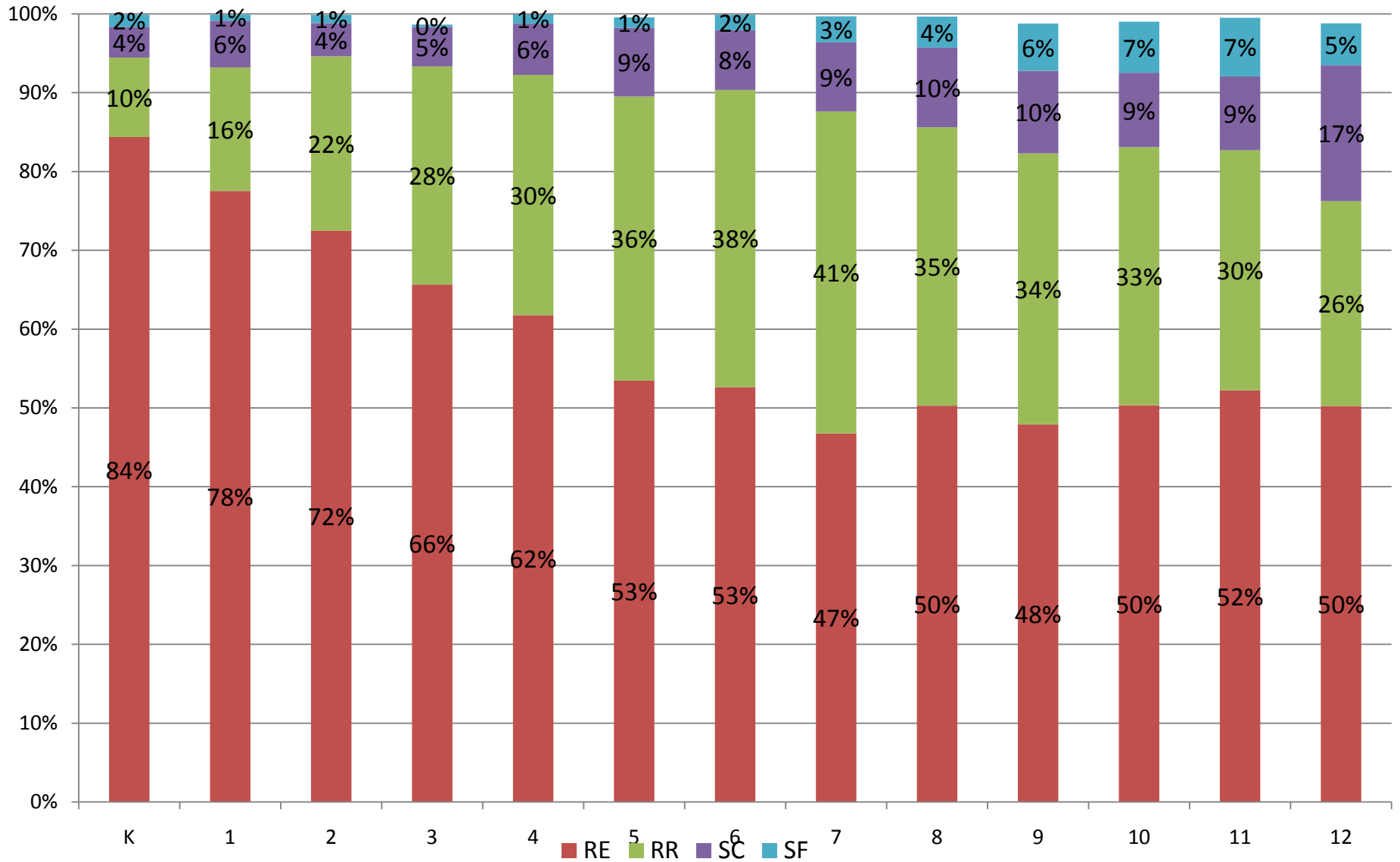


## State July 2008 - 427 Data

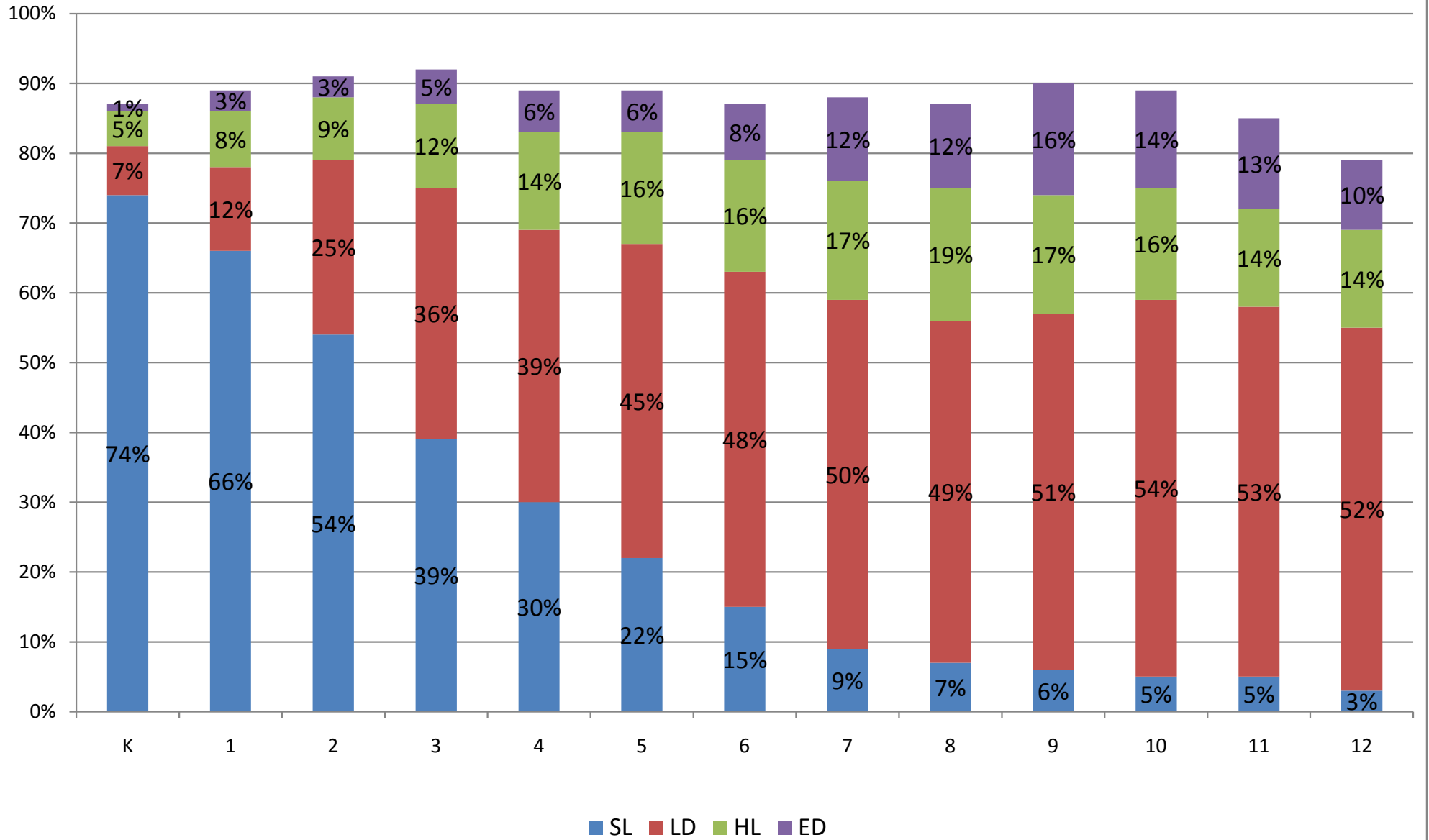


# State July 2008 - 427 Data

## Percent of Special Education Students in each Environment by Grade (Based on July 2008 427)



**Percent of Special Education Students Classified with a Given Disability  
By Grade Level (Based on July 2008 427)**



**Percent of Special Education Students Receiving a Given Related Service  
By Grade (Based on July 2008 427)**

